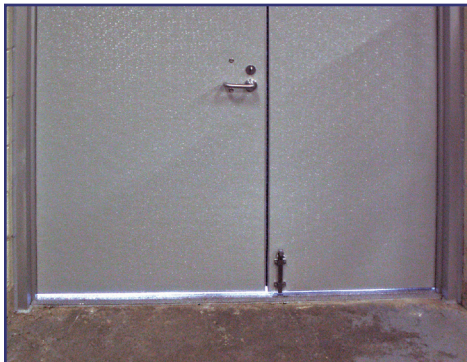


Adjustable Bottom Brush



Adjust Bottom Brush at hinge stile



Before - without Adjustable Bottom Brush



Note that some light will leak through at corners and where pairs meet.

After - with Adjustable Bottom Brush

Reduce air, light, and vermin infiltration under door bottoms with the Special-Lite® SL-301 Adjustable Bottom Brush

One of the challenges of getting a good installation of exterior doors on new construction projects is dealing with irregularities in final floor conditions. Even slight variations from as-drawn configurations can make achieving a good weather-tight fit at the bottom of the door difficult, creating air leaks that compromise HVAC system efficiency and waste energy.

To compensate for out-of-level or out-of-position final floors, as well as normal settling of older buildings, Special-Lite offers a concealed Adjustable Bottom Brush unit that can be adjusted as required at the time of door installation to provide the perfect fit. This patent-pending device features two nylon bristle brushes to create a weather-tight seal with any style threshold. Two adjustment screws at the hinge stile side of the door allow either side or both sides of the brush insert to be moved from .15" extended to .74" fully extended. Adjust it once and forget it; the SL-301 Adjustable Bottom Brush has been tested for over 1.5 million open and close cycles with no change in adjustment. It has also been salt spray tested to 500 hours to ensure it can handle any environment.

The Special-Lite Adjustable Bottom Brush is available for door widths from 12" to 48", and can be specified as a factory-installed option in any of our flush or monumental doors. It is compatible with most types of commercial hardware (contact Special-Lite for exceptions). The Adjustable Bottom Brush can also be easily retrofit into Special-Lite® Doors in the field to improve existing door weathering problems and eliminate the need for surface applied sweeps.