

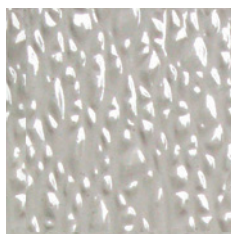


Simplify your life with Special-Lite Toilet Partitions

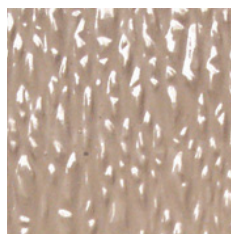
All toilet partitions are floor-mounted, overhead-braced configurations for durability. Urinal screens are wall mounted. All panels and pilasters are 1.25" thick and available in four colors—pearl gray, beige, colonial white, and black. Face sheets are Class C standard with Class A available. Aluminum extrusions are clear anodized. Consult the factory for standard and maximum panel and pilaster sizes.

At Special-Lite, every partition system we make is a custom solution, made to order. We stand behind our new toilet partition products with the same, no-nonsense, 10-year, parts and labor warranty as we offer on our entrance products.

Four color choices



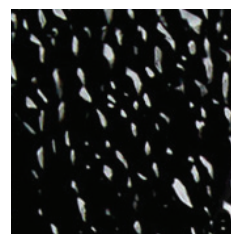
Pearl Gray



Beige



Colonial White



Black



Special-Lite, Inc.

P. O. Box 6, Decatur, MI 49045

Ph: 800.821.6531 • Fx: 800.423.7610 • www.special-lite.com/partitions