

All Fiberglass Framing

Why spend your maintenance budget on sanding and repainting?

Special-Lite® FRP Frames are ideal for corrosive environments that quickly destroy hollow metal, or even stainless steel frames. Fiberglass cannot corrode, rot, or rust. All Fiberglass Framing is best suited for the following environments:

- clean rooms where regular sanitation is required
- pharmaceutical manufacturing and food processing plants
- chemical plants
- pulp and paper mills
- wastewater and water treatment facilities
- marine applications
- entrances that are treated with snow melting chemicals, such as salt.

Benefits

Our exclusive pultruded FRP frames have a 65% glass content which provides excellent impact resistance and strength. They are dimensionally equivalent to hollow metal products, but offer improved aesthetics, performance, durability and longevity that hollow metal just can't match.

Our high-strength, non-corrosive FRP frames are available in a tough, 5 mil thick, long-lasting high-gloss, two-part aliphatic polyurethane coating. This coating is specifically formulated for industrial environments and is available in ten standard colors, any custom color or primer only.

- FDA and USDA compliant.
- Excellent chemical, stain and abrasion resistance.
- Excellent gloss & color retention.
- Remains flexible to resist cracking.
- Easy to clean and sterilize.
- Cosmetic touch-ups in the field are quick & simple.
- Lower new construction frame finish damage by ordering primer only and apply coating AFTER construction trades are finished with their work and before building turn-over.
- 10-year 100% parts and labor warranty and Lifetime Warranty against corrosion.



AF-150

Special-Lite All Fiberglass 150 Frames offer a durable solution in environments that are subjected to chemicals, moisture or abuse.

- Strongest all fiberglass frame on the market for your high traffic or abusive locations!
- Pultruded fiberglass, 1/4" thick, wrap-around profile.
- Available in variety of depths: 5-3/4", 6-3/4", 7-3/4", 8-3/4", and a 4-1/2" – 12" (adjustable).
- 2" face with 2" and 4" head available.
- Extreme strength corner joinery is one piece, 1/4" thick, pultruded FRP 4" x 4" angle.
- Frame anchoring options for masonry: existing concrete or block, sill anchor, concealed existing masonry anchor and new concrete block.
- Frame anchoring options for drywall: standard jamb anchor tuck, KD wrap, optional punch & dimple tuck with either metal or wood studs.



AF-150 Frame

AF-250

Special-Lite All Fiberglass 250 Frames provide a solution to hollow metal frame maintenance issues.

- All fiberglass frame for your exterior or interior locations.
- Pultruded fiberglass, 3/16" thick, wrap-around profile.
- Available in one depth: 5-3/4".
- 2" face with 2" and 4" head available.
- Corner joinery is one piece, 1/4" thick, pultruded FRP 2" x 2" angle.
- Immediate door frame only.
- Knock-down shipment only.
- Frame anchoring options for masonry: existing concrete or block, sill anchor, concealed existing masonry anchor and new concrete block.
- Frame anchoring options for drywall: metal or wood studs.



AF-250 Frame

FRP Center Post

- 5-3/4" Standard Depth. Optional depths: 6-3/4", 7-3/4" & 8-3/4".



Center Post

FRP Fixed or Removable Rim Mullion

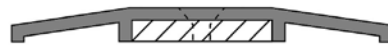
- 2" x 2-13/16" one size fits all frame jamb depths.



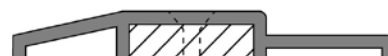
Fixed or Removable Mullion

FRP Thresholds

- Saddle Style
- Bumper Style



Saddle Style Threshold



Bumper Style Threshold

Special-Lite, Inc.

P.O. Box 6 • Decatur, MI 49045

special-lite.com

800.821.6531

Item 1231

5M 11/15 PC



Special-Lite®