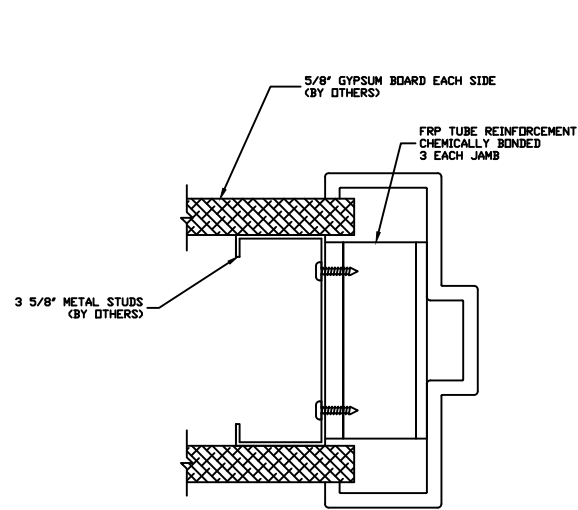
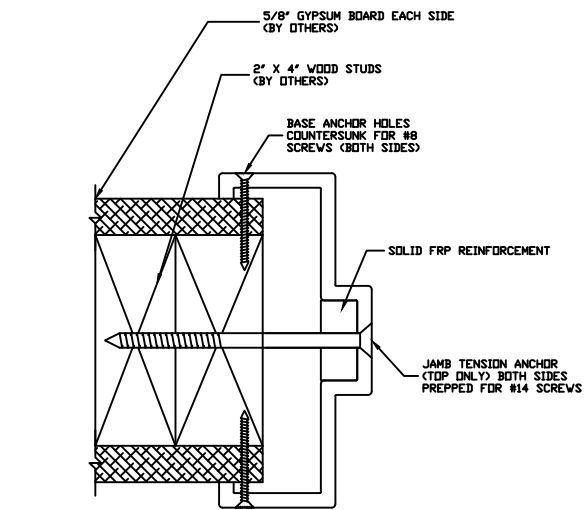
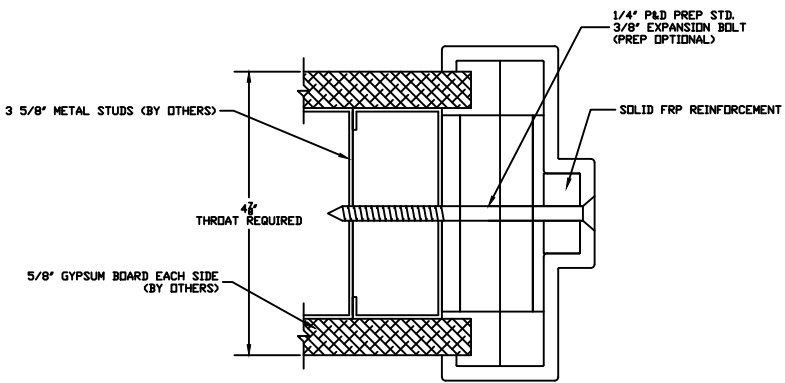
 Special-Lite <small>ENGINEERED ARCHITECTURAL SOLUTIONS</small>		SPECIAL-LITE, INC. 860 South Williams Street P.O. BOX 6 DECATUR, MI 48045 WWW.SPECIAL-LITE.COM	
<small>DRAWN BY: JMM</small> <small>REVISION</small>	AF-150 5 3/4" FRAMING SYSTEM		
<small>A 4/27/17 C</small> <small>B D</small>	<small>DATE: 4/27/2017</small>	<small>SHEET NO. 1 OF 2</small>	<small>FILE: AF150FRAMING.dwg</small>



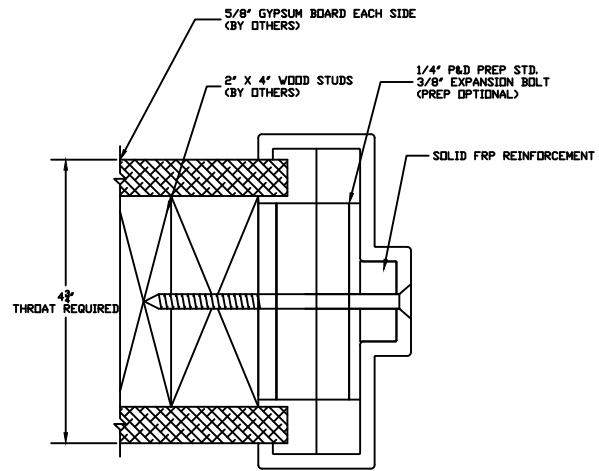
STD JAMB ANCHOR TUCK CONDITION



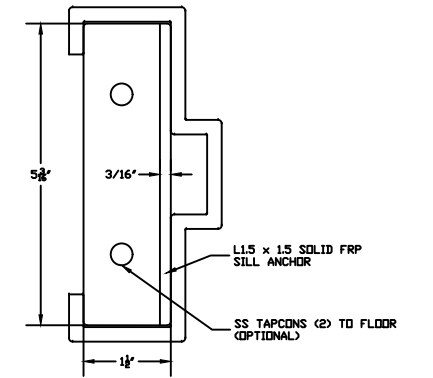
WOOD STUD KD WRAP CONDITION



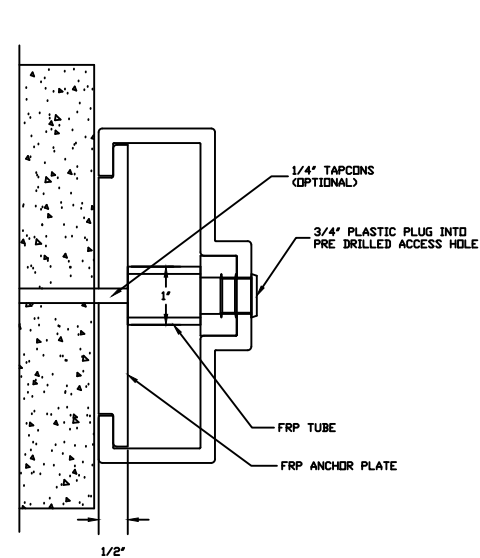
OPTIONAL PUNCH AND DIMPLE TUCK
FRP FRAME @ METAL STUDS



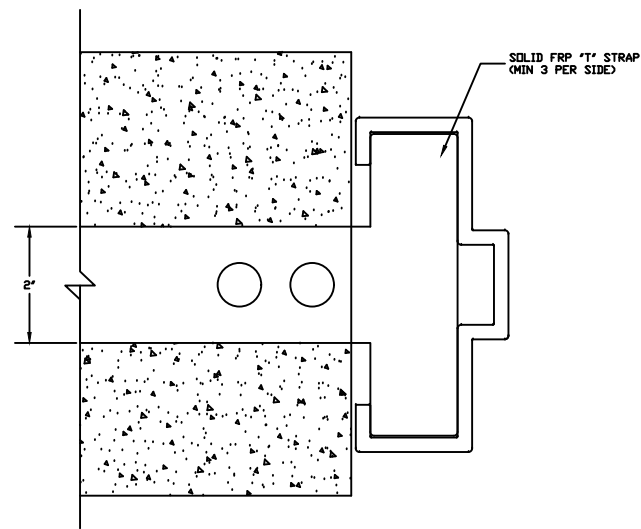
OPTIONAL PUNCH AND DIMPLE TUCK
FRP FRAME @ WOOD STUDS



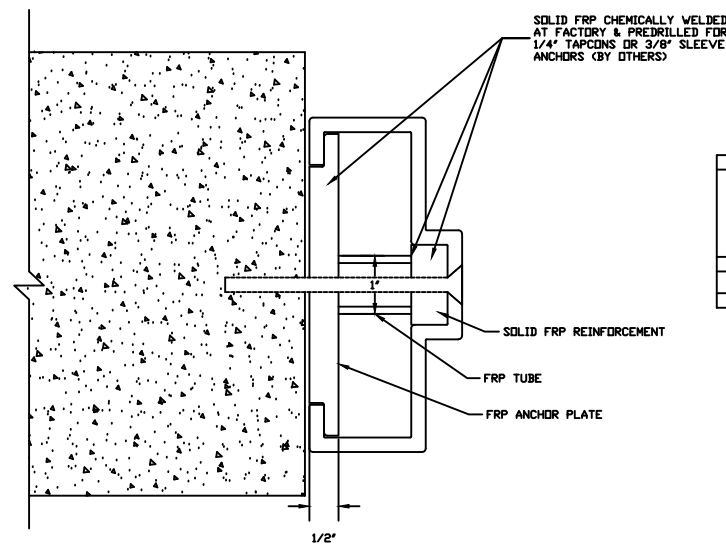
SILL ANCHOR



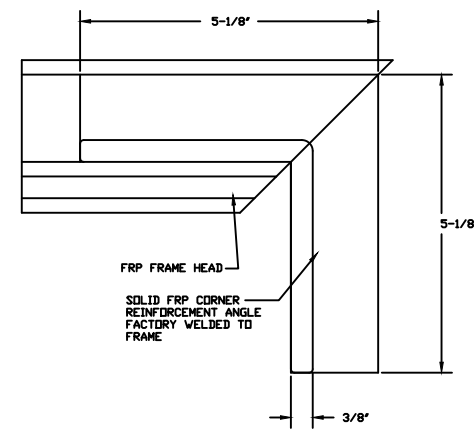
CONCEALED EXISTING MASONRY ANCHOR



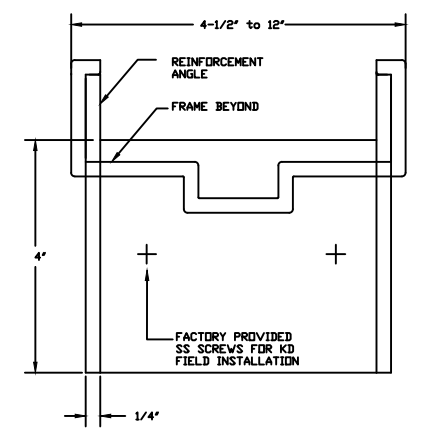
FRP FRAME @ NEW CONC BLOCK



FRP FRAME @ EXISTG CONC OR BLOCK



SIDE VIEW



END VIEW

TYP CORNER REINFORCEMENT

		SPECIAL-LITE, INC. 860 South Williams Street P.O. BOX 6 DECATUR, MI 48045 WWW.SPECIAL-LITE.COM	
		DRAWN BY: JMM REVISION: A 4/27/17 C B 6/16/17 D	AF-150 5 3/4" FRAMING SYSTEM DATE: 6/16/2017 SHEET NO. 2 OF 2 FILE: AF150FRAMING.dwg