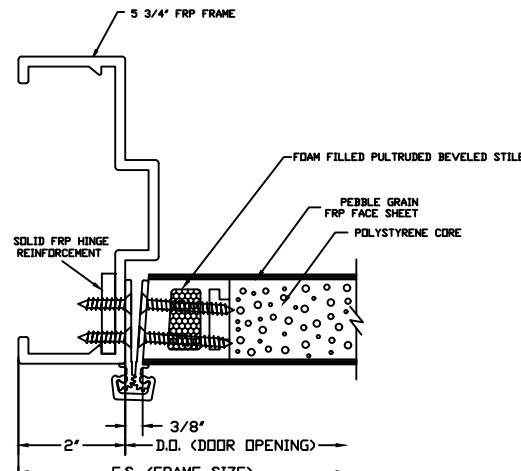
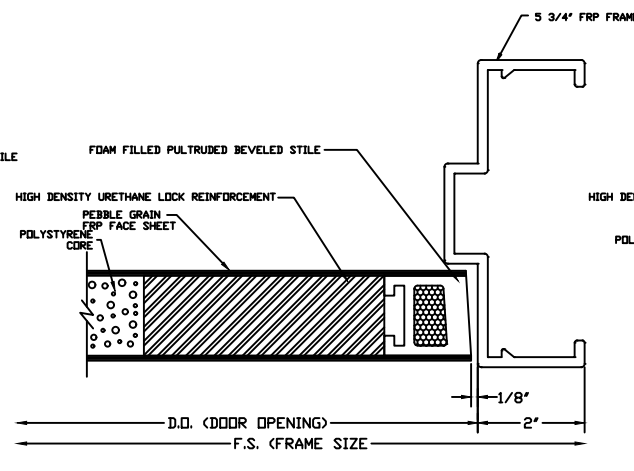


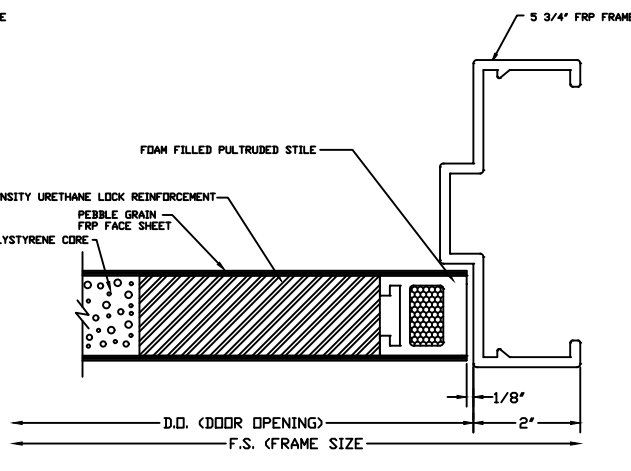
BUTT HINGE JAMB DETAIL
 (NOT AVAILABLE ON BEVELED STILE)



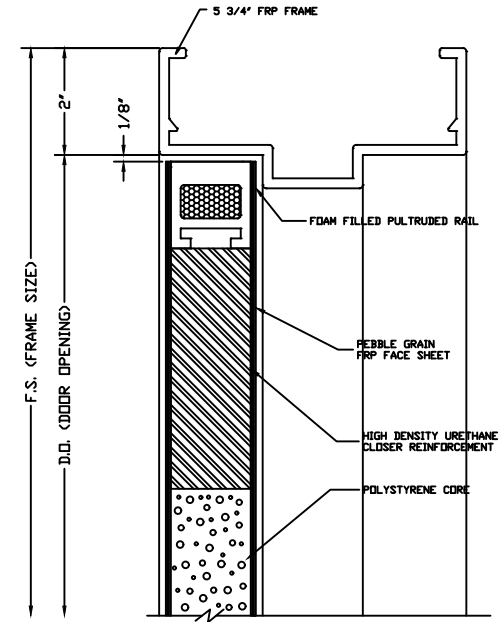
CONTINUOUS HINGE JAMB DETAIL



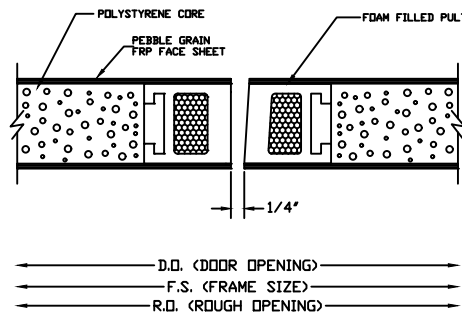
LOCK JAMB DETAIL



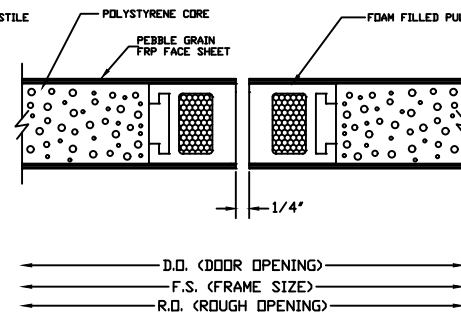
LOCK JAMB DETAIL
 (OPTIONAL SQUARE STILE)



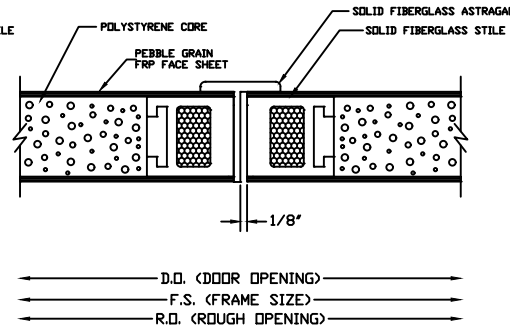
HEAD DETAIL



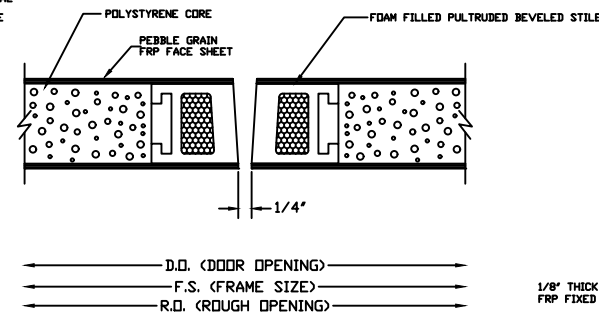
MEETING STILES (STANDARD)



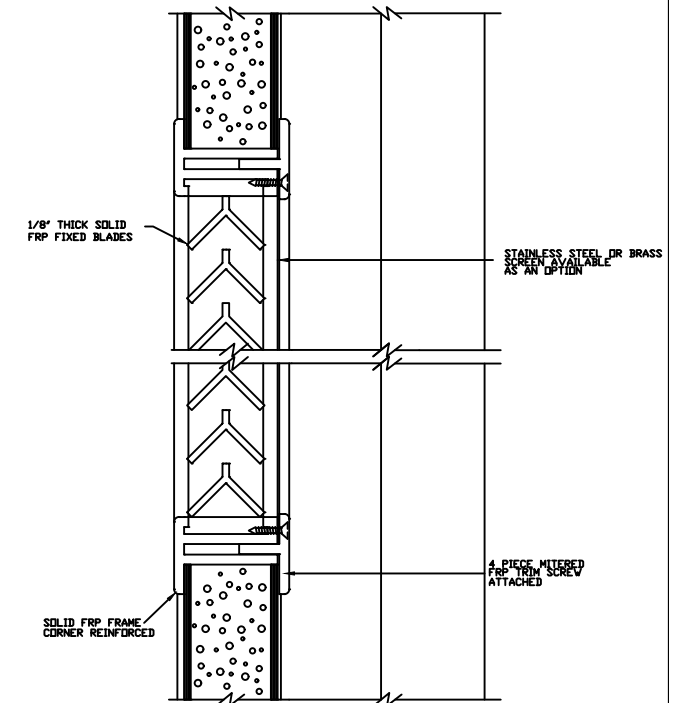
MEETING STILES OPTIONAL SQUARE STILES



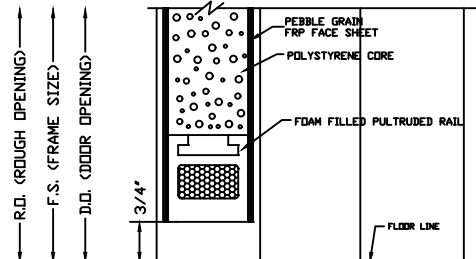
MEETING STILES WITH OPTIONAL ASTRAGAL



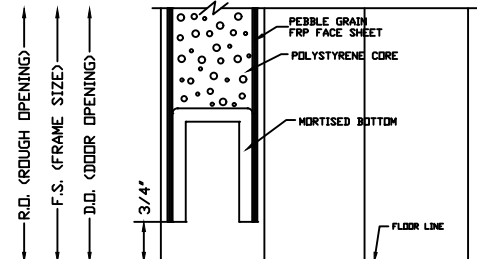
MEETING STILES WITH OPTIONAL DUAL BEVELED STILES



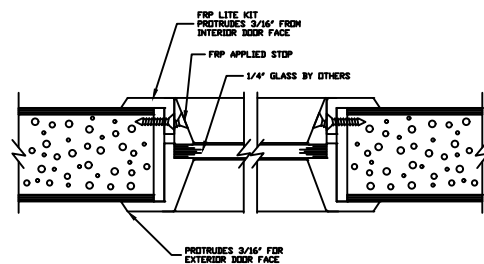
LOUVER WITH INSECT SCREEN DETAIL



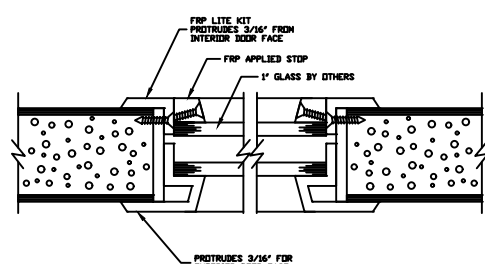
SILL DETAIL (FLUSH BOTTOM)



SILL DETAIL (MORTISED BOTTOM)



1/4" GLASS VISION LITE KIT DETAIL



1" GLASS VISION LITE KIT DETAIL

Special-Lite ENGINEERED ARCHITECTURAL SOLUTIONS		SPECIAL-LITE, INC. 860 South Williams Street P.O. BOX 6 DECATUR, MI 48045 WWW.SPECIAL-LITE.COM	
DRAWN BY: JMM REVISION N 18/30/18 P Q 11/23/18 Q	AF-217 ALL FIBERGLASS COMPOSITE PEBBLE GRAIN DOOR	DATE: 8/30/2018 SHEET NO. 1 OF 1	FILE: AF217DETAILS.dwg