



Rockport-Fulton Middle School

"18 years of high traffic student use and Hurricane Harvey.... What a testament to Special-Lite products!"

— Sam Haggard, Southwest Architectural Sales,
a Special-Lite Representative

Location:
Rockport, TX

Application:
Educational

Install Type:
Retrofit

Products:
Hybrid FRP Doors (SL-17)
Aluminum Heavy Wall Tube Frame System w/Applied Stops



Overview

Rockport-Fulton Middle School was retrofitted with new entrance doors in 2000. That included two pairs for the main entrance, a pair for the gym entrance, and a pair for the school's music hall. All three primary entrances utilized SL-17 Hybrid FRP Doors located on the exposed southern side of the school. Aluminum framing from Special-Lite was also installed for the main entrance.

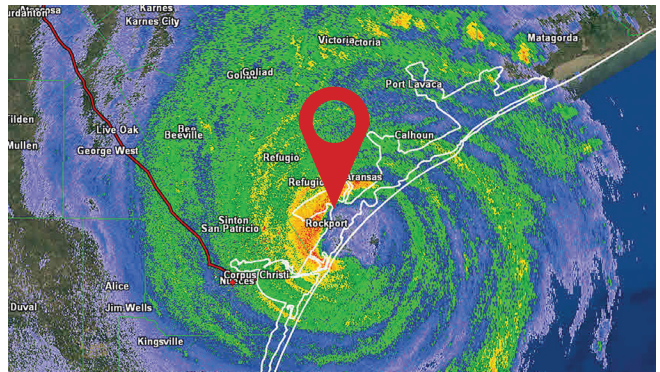
At that time, the SL-17 was not hurricane/impact-rated. And almost two decades later, those doors, like those in most K-12 schools, saw their fair share of abuse and heavy traffic.



The Storm

In late August 2017, Hurricane Harvey landed on the southeast coast of Texas, about 30 miles northeast of Corpus Christi. The path of the category four storm headed straight for the twin communities of Rockport and Fulton, including Rockport-Fulton Middle School.

The slow-moving and massive storm, with wind speeds of 130 miles per hour, caused \$158.8 billion in damage, primarily from catastrophic flooding in the Houston metropolitan area and Southeast Texas. The resulting floods inundated hundreds of thousands of homes, displacing more than 30,000 people and prompted more than 17,000 rescues. Harvey caused 106 confirmed deaths in 2017.





Outcome

A few months later, in early 2018, one of Special-Lite's distributors conducted a walk-through inspection of the school. While noting some cosmetic issues, which are common for 18 years of student use, he was told that all the doors performed flawlessly before and after the hurricane. He observed that all Special-Lite doors were "still in great shape and fully functional."



Check out our hurricane ratings and more!

Today, many of Special-Lite's doors, including the SL-17, are impact-rated, meeting the strict requirements of Florida's HVHZ (High-Velocity Hurricane Zone) and the Texas Department of Insurance (TDI).

The construction of SL-17 has stayed the same since 2000, when those school doors were built.

The distinct construction of this commercial door results in an incredible and unprecedented level of flexural strength. It allows the door's plane to bend slightly with windstorm pressure changes while maintaining a sealed and taut position (contingent on using proper hardware—please reference our Configuration Worksheets).

Contrast this capability with hollow metal doors, which, once bent, never return to their original functionality.

The highly durable, low-maintenance, dent- and graffiti-resistant SL-17 stood up to the forces of one of the costliest hurricanes in U.S. history; imagine what it can do for you.

