

4

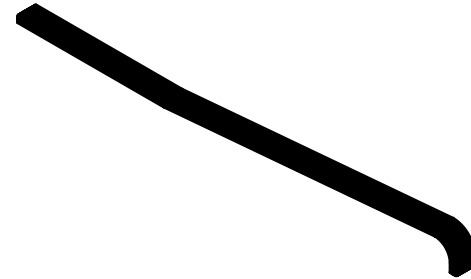
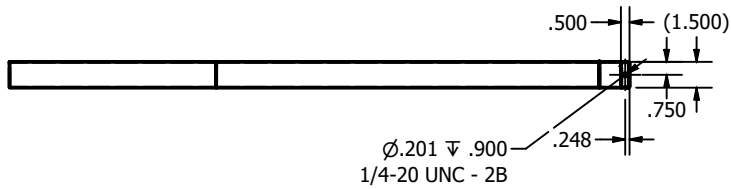
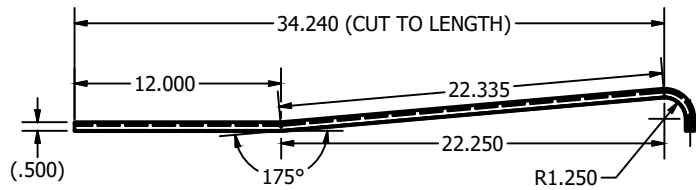
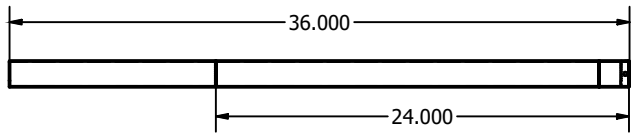
3

2

1

REVISION HISTORY

ZONE	REV	DESCRIPTION	DATE	APPROVED
	A			



<p>UNLESS OTHERWISE SPECIFIED</p> <p>0.0" ± 0.060"</p> <p>0.00" ± 0.030"</p> <p>0.000" ± 0.010"</p> <p>0.0000" ± 0.002"</p> <p>∠ ± 2.0°</p> <p>CORNER RADII 0.015"</p> <p>ALL MACHINED SURFACES TO BE FREE OF BURS</p>	<p>CONFIDENTIALITY NOTICE: THIS DRAWING, INCLUDING ANY ATTACHMENTS, IS FOR THE SOLE USE OF THE INTENDED RECIPIENT(S) AND MAY CONTAIN CONFIDENTIAL AND PRIVILEGED INFORMATION. ANY UNAUTHORIZED REVIEW, USE, DISCLOSURE OR DISTRIBUTION IS PROHIBITED. IF YOU ARE NOT THE INTENDED RECIPIENT, PLEASE CONTACT SPECIAL-LITE, INC. AND DESTROY ALL COPIES OF THE ORIGINAL DRAWING.</p>		<p>860 S. WILLIAMS STREET P.O. BOX 6 DECATUR, MI 49045 PH: (800) 821-6533 FX: (800) 423-7610 SPECIAL-LITE.COM</p>		
	<p>DRAWN BY B. Schneider 4/10/2019</p>		<p>TITLE</p>		
	<p>ENGINEER B. Schneider</p>		<p>SIZE B</p>	<p>DWG NO</p>	<p>REV A</p>
	<p>APPROVED BY</p>		<p>SCALE 0.14 : 1</p>	<p>STATUS</p>	<p>SHEET 1 OF 1</p>
<p>MATERIAL Aluminum 6063-T5</p>		<p>SL-150 GOOSE NECK PUSH BAR</p>			

4

3

2

1