



INSTALLATION INSTRUCTIONS

Smoke Seal application for the Smoke Rated SLI Series

IMPORTANT: Read all instructions before beginning installation.

Special-Lite provides these instructions to help prevent installation problems caused by most common errors. They are not intended to be a foolproof and suitable for every situation. There are many variations of installations not covered in these instructions that Special-Lite assumes are general construction knowledge to an experienced installer. Selection of an experienced installer is the sole responsibility of the project owner or responsible party.

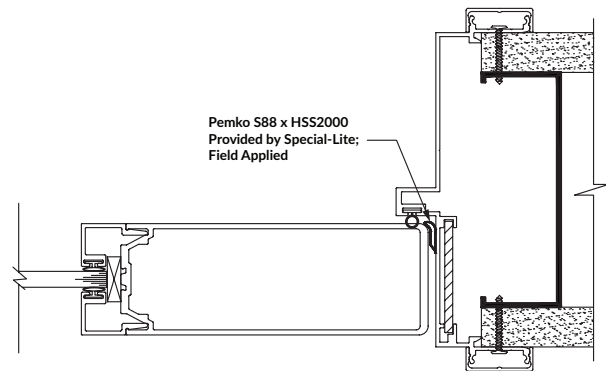
Failure to follow good practice in installation will void the warranty on Special-Lite products.

If you have any questions about installation techniques for your particular project, please call 1-800-821-6531 and ask for a Special-Lite Customer Service Representative.

You can find these and other Installation Instructions on Special-Lite's website at www.special-lite.com.

The SLI series is available with a Smoke and Draft Control "S-Label" rating. If this option is selected, these openings will come from the factory with all the necessary Category H Smoke and Draft control gaskets to be applied in the field. (Pemko S88 x HSS2000)

(Note: Existing SLI models in the field cannot be retrofitted for the S-Label Rating)



1. Pre-cut the hinge jamb, strike jamb and header pieces to fit before installing. Do not install as one continuous piece - cut adhesive gasketing at a 45° angle at the corners) at the corner where the top and sides meet.
 2. Remove approximately 24" (61 cm) of backing from the adhesive gasketing strip. Be careful not to touch adhesive or drag the adhesive on ground.
 3. Position the adhesive gasketing and do not stretch material. (Product can retract or shrink if stretched.)
 4. The use of a hand roller is highly recommended. Remove the next 24" (61 cm) of paper backing and repeat (2.) until the entire length for a top or side is installed. If a pre-cut length overruns a top or side, stretching has occurred. Immediately remove and reset.
 5. Once installed, apply firm pressure along the entire surface of the product to ensure proper adhesion to the frame.
- Use very firm, perpendicular pressure when applying.
 - Double check adhesion after 2-3 hours before leaving job overnight. If gasket separates from frame, press again with firm pressure in place.
 - If adhesive strip, is exposed, airborne dust may impede adhesion.
 - If frames are too cold (below 50 degrees F) or too hot (above 100 degrees F) adhesion may be impaired.