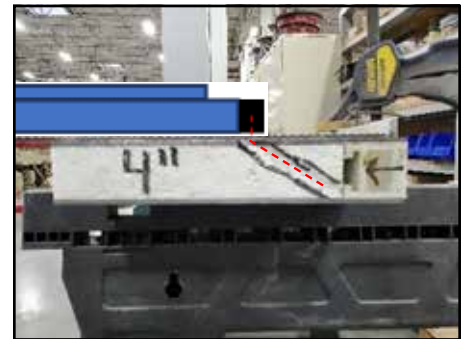


FIELD INSTRUCTIONS

Electrical Device to EPT Wire Chase Prep for AF Composite Series Doors



On the hinge stile of the door, there is a $3/8" \times 3/4"$ channel that runs the length of the door located 1.5" off of the edge, pictured above. In order to access this channel:

1. Lay your electric device on the face sheet of the door in the desired location.
2. Mark the location of the hole that the wires will come out of the device onto the face of the sheet.
3. Using a $1/4"$ drill bit, carefully drill into the face just enough to poke through the FRP sheet that is $1/8"$ thick. You can go down a little further, just make sure not to come out the other side. **NOTE:** *If this hole is greater than 1.5" from the edge, you will have to angle the drill bit accordingly. See pictures above as reference.*
4. Angle the drill bit and slowly drill until reach the fiberglass rail. It will be rather quick as it is only foam, but you will feel a hard stop from the fiberglass rail.
5. Open up the hole to the desired size and make sure the wires can pass through.
6. Where the EPT is located, drill an access hole into that same channel to connect the device to the EPT.
7. Feed the wires through.