



All Fiberglass Doors (AF-100) with All Fiberglass Framing (AF-150).

Solutions for Car Wash Facilities

Corrosion-Resistant Entrances Engineered for Car Washes

Keep your facility looking great long-term with resilient doors and frames.

You need reliable solutions that withstand the unique conditions of car wash facilities, which often destroy steel doors and frames.

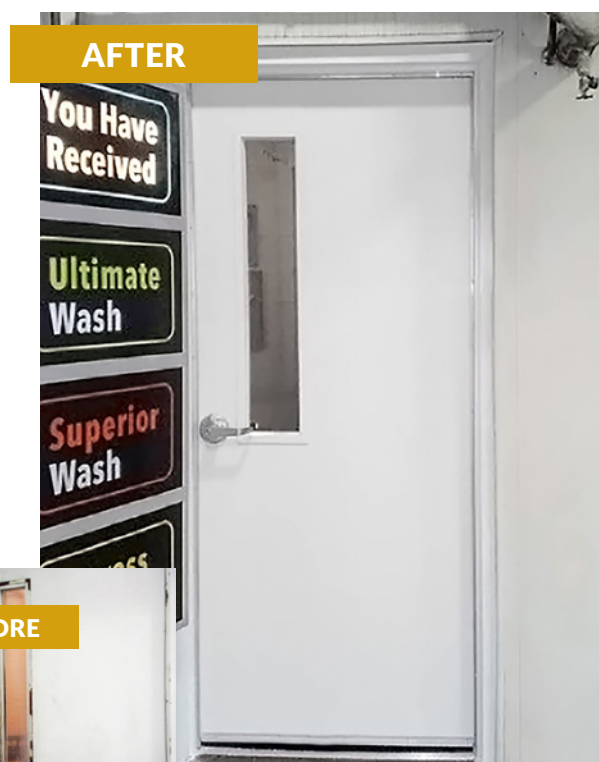
Learn how you can elevate your car wash with enduring quality and style to help enhance customer experience.

Challenges in Car Wash Environments

- **Rust and Corrosion:** Combating corrosion is critical in car wash environments where water, chemicals, and moisture are prevalent, requiring materials resistant to rust and deterioration.
- **Security:** Balancing accessibility with security is crucial to safeguard chemicals and equipment while providing desired access for customers and staff.
- **Maintenance:** In the fast-paced car wash industry, low-maintenance solutions are essential to minimize downtime and ensure a seamless operation.
- **Weather:** Exterior entrances must withstand exposure to various weather conditions and temperature fluctuations, requiring materials resistant to corrosion and damage.
- **Customization:** Car wash facilities often have unique branding and design requirements, necessitating customizable solutions to maintain aesthetic appeal.

Overcoming Car Wash Challenges

Selecting high-quality doors and frames engineered for corrosion resistance is essential to address the unique challenges of car wash environments. Collaborate with experts who understand the needs of the industry to ensure reliability, security, and durability while meeting aesthetic and maintenance requirements.



BEFORE



*Before: Car wash conditions cause the original hollow metal door and frame to rust.
After: Installing a Pultruded Fiberglass Door and Frame provides a resilient long-term solution.*



Pebble Grain Hybrid FRP Doors (SL-17)



Pebble Grain Hybrid FRP Door (SL-17)

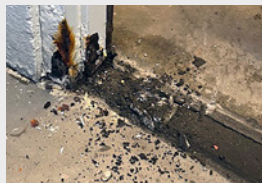
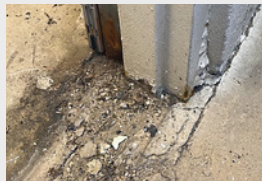
Choose Dependable Solutions Where It Counts

Our doors and frames are expertly crafted to withstand high-moisture and corrosive car wash environments while ensuring both security and aesthetic appeal. Whether you require secure storefront doors, resilient back doors, or versatile solutions, our innovative products are tailored to help improve your customer experience and save time and money long-term.

Before & After:

Cutler Car Wash

Side Entrance & Chemical Storage



BEFORE: Exposure to moisture, chemicals, and the elements caused this hollow metal door and frame to rust, affecting its functionality, security, and efficiency during business hours.



AFTER: Selecting a corrosion-resistant Hybrid FRP Door and Fiberglass Frame improves reliability and appearance.

Why Choose Special-Lite?

- **Durability:** Our doors and frames are built to last with resilient, corrosion-resistant materials that integrate seamlessly with your facility and withstand heavy use.
- **Security:** Our products meet modern security standards, providing peace of mind.
- **Customization:** Choose from various colors, finishes, hardware, and branded mid-panel styles.
- **One-Source Simplicity:** Enjoy the convenience of sourcing all your door, frame, and hardware needs from a single supplier, ensuring reliability and performance.
- **Warranty:** We stand behind our products with straightforward warranties that work.

Get Started Today

Contact your Special-Lite Representative today to explore solutions that enhance and secure your car wash facility. Do you have a challenging entryway, a unique brand identity, or specific door requirements? No problem. Our team of experts will collaborate with you to create a tailored solution that meets your needs and solves your current door problems.



Tell us how we can help!