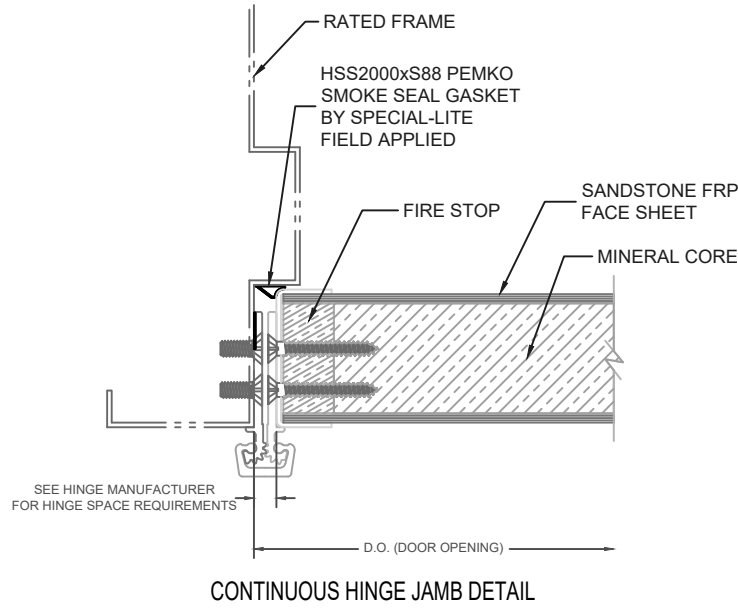
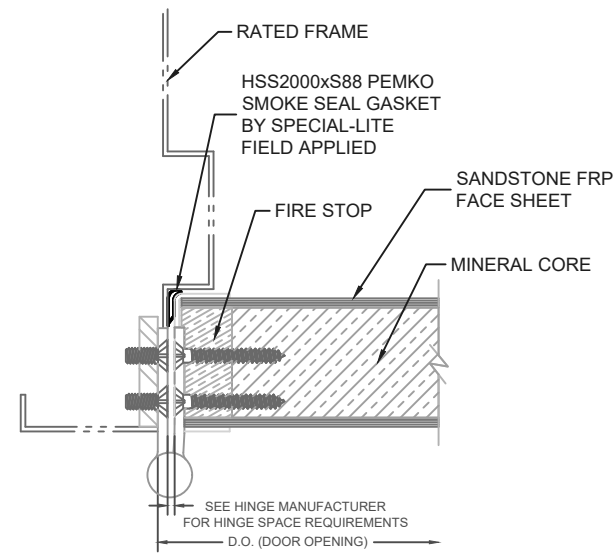


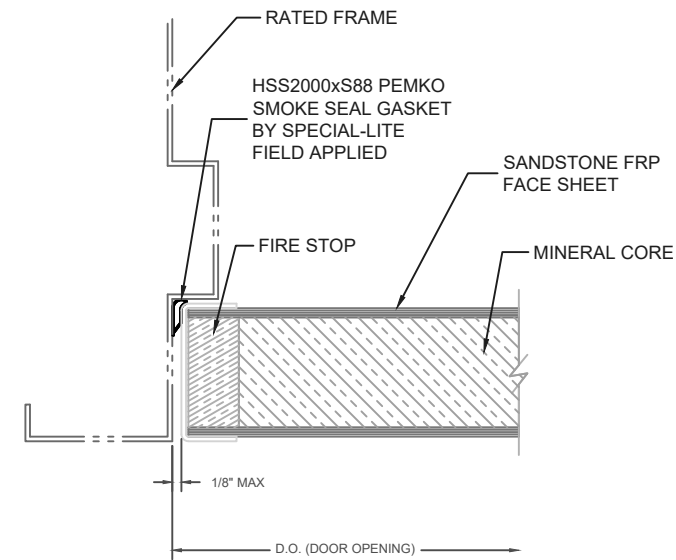
***All hardware preps and modifications to doors must be done in accordance with NFPA 80-16**



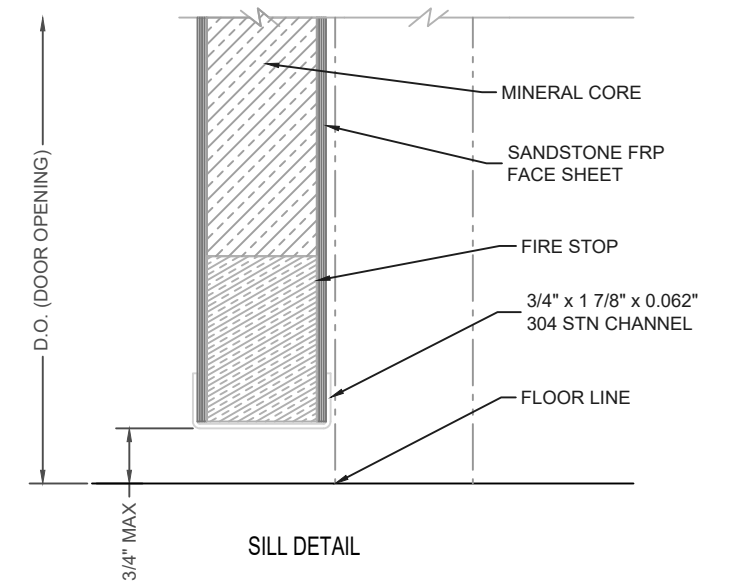
CONTINUOUS HINGE JAMB DETAIL



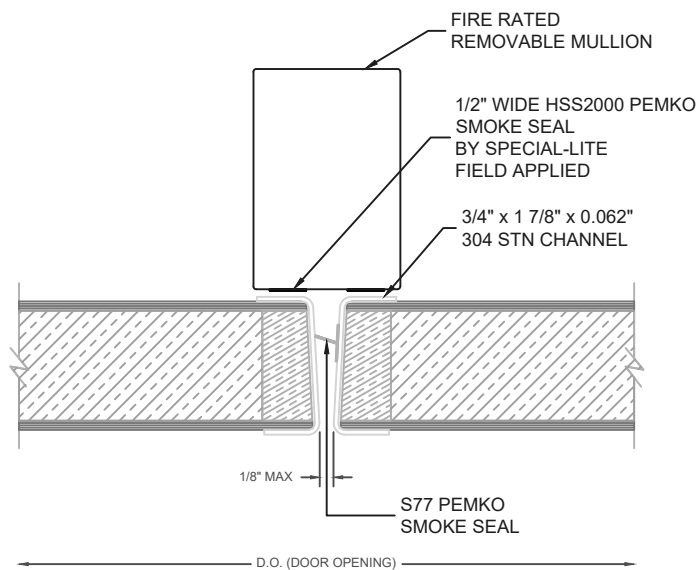
BUTT HINGE JAMB DETAIL



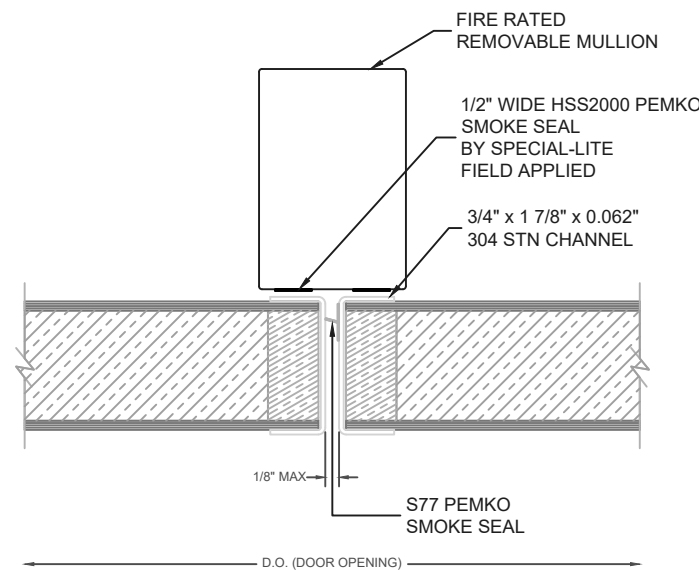
LOCK JAMB DETAIL



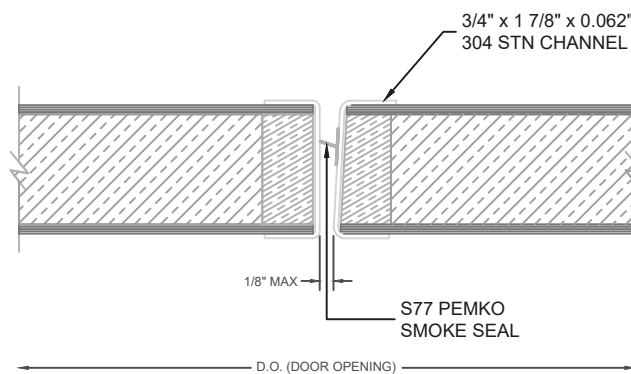
SILL DETAIL



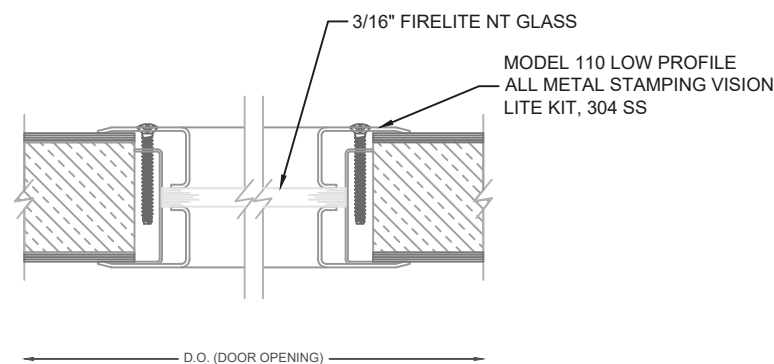
STANDARD MEETING DETAIL



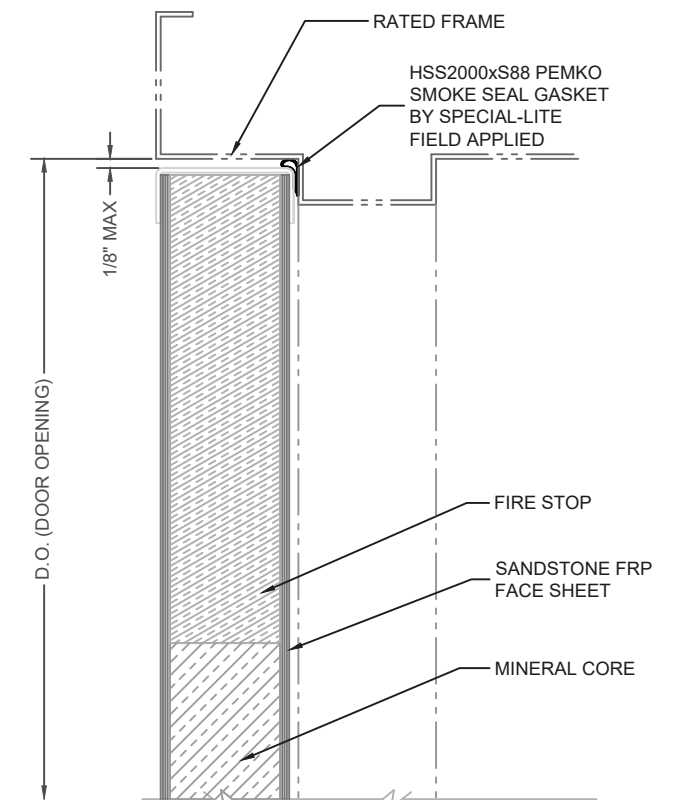
OPTIONAL MEETING DETAIL




LOCKSET MEETING DETAIL



VISION-LITE KIT DETAIL



DOOR HEAD DETAIL

		SPECIAL-LITE, INC. 860 South Williams Street P.O. BOX 6 DECATUR, MI 48045 WWW.SPECIAL-LITE.COM	
DRAWN BY: JMM REVISION:	SL-23 FIRE RATED FRP - SANDSTONE-TEXTURE DOOR		
A 4/3/17 B 11/30/18	C 2/22/18 D 3/22/18	DATE: 3/22/2018	SHEET NO. 1 OF 1
		FILE: SL23DETAILS.dwg	